








REVIEWED
By Sarah Collins at 10:35 am, Oct 30, 2023

Worklist: 6538

<u>LAB CASE</u>	<u>ITEM</u>	<u>ITEM TYPE</u>	<u>DESCRIPTION</u>	
M2023-3011	1	BCK	AM 25/AM 26 Blood MultiDrug/THC Screen by LC-QQQ	
M2023-4028	1	BCK	AM 25/AM 26 Blood MultiDrug/THC Screen by LC-QQQ	
M2023-4028	2	BCK	AM 25/AM 26 Blood MultiDrug/THC Screen by LC-QQQ	
M2023-4028	3	BCK	AM 25/AM 26 Blood MultiDrug/THC Screen by LC-QQQ	
M2023-4028	4	BCK	AM 25/AM 26 Blood MultiDrug/THC Screen by LC-QQQ	
M2023-4210	2	BCK	AM 25/AM 26 Blood MultiDrug/THC Screen by LC-QQQ	
M2023-4214	1	BCK	AM 25/AM 26 Blood MultiDrug/THC Screen by LC-QQQ	
M2023-4218	3	BCK	AM 25/AM 26 Blood MultiDrug/THC Screen by LC-QQQ	
M2023-4257	1	BCK	AM 25/AM 26 Blood MultiDrug/THC Screen by LC-QQQ	
M2023-4275	1	BCK	AM 25/AM 26 Blood MultiDrug/THC Screen by LC-QQQ	
M2023-4288	2	BCK	AM 25/AM 26 Blood MultiDrug/THC Screen by LC-QQQ	
M2023-4350	2	BCK	AM 25/AM 26 Blood MultiDrug/THC Screen by LC-QQQ	
P2023-2785	1	BCK	AM 25/AM 26 Blood MultiDrug/THC Screen by LC-QQQ	
P2023-2841	1	BCK	AM 25/AM 26 Blood MultiDrug/THC Screen by LC-QQQ	
P2023-2914	1	BCK	AM 25/AM 26 Blood MultiDrug/THC Screen by LC-QQQ	
P2023-3094	1	BCK	AM 25/AM 26 Blood MultiDrug/THC Screen by LC-QQQ	
P2023-3097	1	BCK	AM 25/AM 26 Blood MultiDrug/THC Screen by LC-QQQ	
P2023-3114	2	BCK	AM 25/AM 26 Blood MultiDrug/THC Screen by LC-QQQ	
P2023-3123	2	BCK	AM 25/AM 26 Blood MultiDrug/THC Screen by LC-QQQ	
P2023-3132	1	BCK	AM 25/AM 26 Blood MultiDrug/THC Screen by LC-QQQ	
P2023-3133	1	BCK	AM 25/AM 26 Blood MultiDrug/THC Screen by LC-QQQ	

<u>LAB CASE</u>	<u>ITEM</u>	<u>ITEM TYPE</u>	<u>DESCRIPTION</u>	
P2023-3147	1	BCK	AM 25/AM 26 Blood MultiDrug/THC Screen by LC-QQQ	
P2023-3186	1	BCK	AM 25/AM 26 Blood MultiDrug/THC Screen by LC-QQQ	
P2023-3191	1	BCK	AM 25/AM 26 Blood MultiDrug/THC Screen by LC-QQQ	
P2023-3194	1	BCK	AM 25/AM 26 Blood MultiDrug/THC Screen by LC-QQQ	
P2023-3207	1	BCK	AM 25/AM 26 Blood MultiDrug/THC Screen by LC-QQQ	
P2023-3215	1	BCK	AM 25/AM 26 Blood MultiDrug/THC Screen by LC-QQQ	
P2023-3219	1	BCK	AM 25/AM 26 Blood MultiDrug/THC Screen by LC-QQQ	

AM# 25: Multi-Drug Screen in Blood and Urine by LC-MS/MS

Extraction Date: 10/24/2023

Plate lot#: 230712

Mobile phase A: 10mM Amm Form

Instant Buffer I

Blank Blood Lot: Lampire 23E52981

LCMS-QQQ ID: 069901

Analyst: Celena Shrum

Plate Retest Date: 1/12/2024

Mobile phase B: 0.1% Formic Acid in MeOH

Ethyl Acetate LC Methanol

Column: Phenomenex Phenyl Hexyl (4.6x50mm, 2.6um)

Pre-Analytic:

- 1. Check levels of mobile phases and needle wash refill as needed. Ensure waste is not full.
- 2. Ensure correct column is installed and begin mobile phase flow allow to equilibrate ~ 30 minutes.

Analytic:

- 1. Remove standards, plate, controls, and samples from cold storage. Allow to reach room temperature.
- 2. Using a calibrated pipette, pipette **250µL blood** into wells of analytical (standards) plate. **Pipette ID: 16**
- 3. Pipette **250µL 0.5 M ammonium hydroxide** in wells of analytical plate.
- 4. Place on shaking incubator at ambient temp., 900rpm for 15 minutes.
- 5. Transfer **200-450µL of blood+base and** mixture to corresponding wells of SLE+ plate.
Amount transferred: 250µl
- 6. Apply positive pressure for approx. 10-15 seconds (or until no liquid remains on top of sorbent).
(Load at 85-100 PSI- Selector to the right). Manifold ID: 067104
- 7. Wait 5 minutes.
- 8. Add **900uL ethyl acetate**.
- 9. Wait 5 minutes.
- 10. Apply positive pressure for approx. 15 seconds. *(10-15 PSI- Selector to the left).*
- 11. Add **900uL ethyl acetate**.
- 12. Wait 5 minutes.
- 13. Apply positive pressure for approx. 15 seconds. *(10-15 PSI- Selector to the left).*
- 14. Remove plate containing eluate.
- 15. Add 50µl of 1% HCl in MeOH to all wells in the run and place ACT cover on top of plate prior to drying.
- 16. Place on SPE Dry and evaporate to dryness at approx. 35°C.
- 17. Reconstitute in **100µL 20% LC MeOH** and heat seal plate with foil. Place in autosampler and run worklist.

Post-Analytic

- 1. Open quantitation software and create a new quantitation batch.
- 2. Make necessary changes to integration limits
- 3. Evaluate samples, S/N of primary transition >5 and S/N of secondary transition >3 or evaluation of peak symmetry and resolution. Within +/- 2% or 0.1 min RT of administrative control. Calculated concentration of 5 or greater or 2-5 for discretionary range.
- 4. Did all QCs pass for each analyte? If no, describe issue in comments (below).
- 5. Central File Packet to include: LIMS Worklist, Method Checklist, Calibration and Control Reports

COMMENTS:

	1	2	3	4	5	6	7	8	9	10	11	12
A	CAL	M2023-4028-3	M2023-4350-2	P2023-3132-1	P2023-3219-1*							
B	P2023-3219-1	M2023-4028-4	P2023-2785-1	P2023-3133-1								
C		M2023-4210-1	P2023-2841-1	P2023-3147-1								
D		M2023-4214-1	P2023-2914-1	P2023-3186-1								
E	NEG CTRL	M2023-4218-3	P2023-3094-1	P2023-3191-1								
F	M2023-3011-1	M2023-4257-1	P2023-3097-1	P2023-3194-1								
G	M2023-4028-1	M2023-4275-1	P2023-3114-2	P2023-3207-1								
H	M2023-4028-2	M2023-4288-2	P2023-3123-2	P2023-3215-1								

*Moved durine SLE portion of the extraction (moved to B7)

All samples were moved to columns 7-10 during the SLE portion of the extraction (A1 was moved to A7, D3 was moved to D9, etc.)

AM #25 Multi-Drug Screen. Results



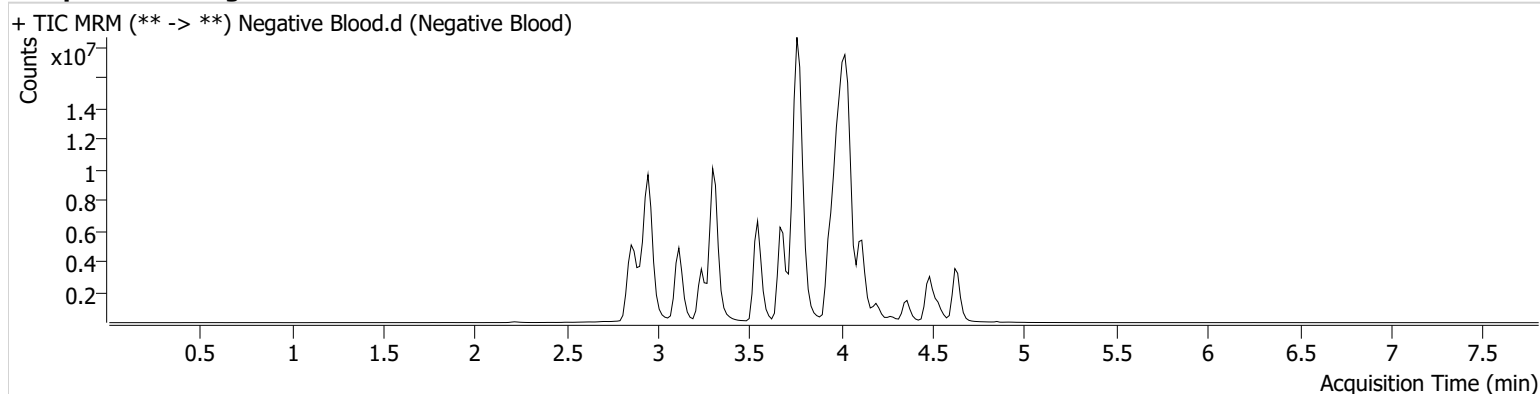
Batch results D:\MassHunter\Data\2023\AM 25 26\102423 AM 25 26 CS\QuantResults\AM 25.batch.bin
Calibration Last Update 10/27/2023 11:34:04 AM

Instrument Falco (069901)
Type Sample
Acq. Method AM 25 MDS.m
Sample Position P2-E7
Injection Volume 5
Acq. Date-Time 10/24/2023 9:02:55 PM
Sample Info.

Data File Negative Blood.d
Sample Negative Blood
Operator Celena Shrum
Comment

Only drugs and concentrations listed on the laboratory report itself are appropriate to be used for interpretation purposes. Any drugs or values included in the notes but not included on the report are used by laboratory personnel to make determinations/reach conclusions within the confines of the methods.

Sample Chromatogram



AM #25 Multi-Drug Screen. Results

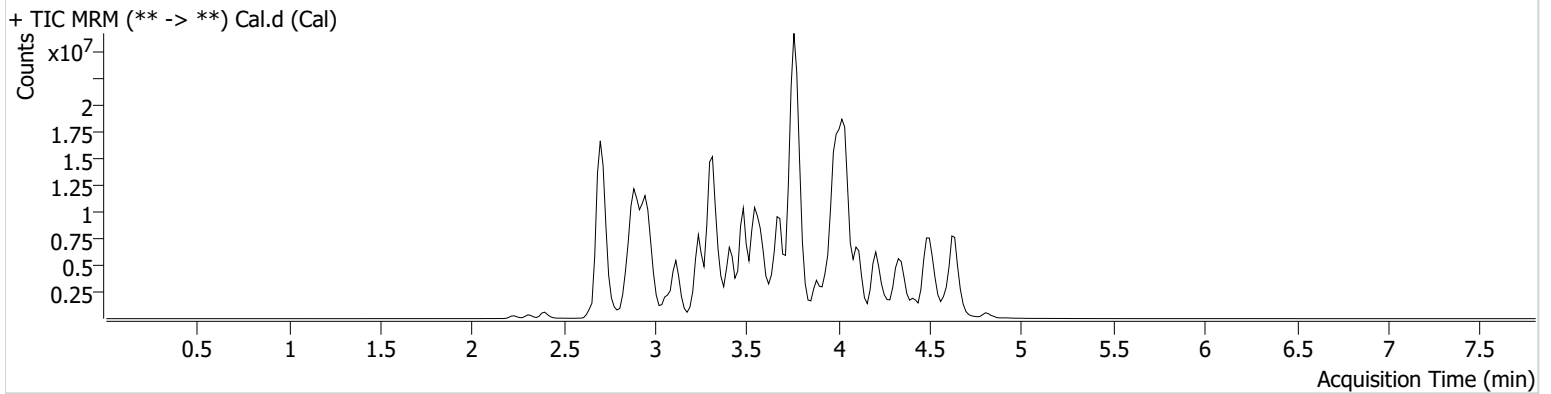


Batch results D:\MassHunter\Data\2023\AM 25 26\102423 AM 25 26 CS\QuantResults\AM 25.batch.bin
Calibration Last Update 10/27/2023 11:34:04 AM

Instrument Falco (069901) **Data File** Cal.d
Type Cal **Sample** Cal
Acq. Method AM 25 MDS.m **Operator** Celena Shrum
Sample Position P2-A7 **Comment**
Injection Volume 5
Acq. Date-Time 10/24/2023 8:54:21 PM
Sample Info.

Only drugs and concentrations listed on the laboratory report itself are appropriate to be used for interpretation purposes. Any drugs or values included in the notes but not included on the report are used by laboratory personnel to make determinations/reach conclusions within the confines of the methods.

Sample Chromatogram



Name	RT	Resp.	S/N	Ratio	S/N	ISTD Resp.	Final Conc.
10-OH-Carbamazepine	3.765	2114832	180.29	111.4	565.48	14852864	10.0000 ng/ml
6-MAM	2.851	33007	32655.35	88.5	15379.56	748853	10.0000 ng/ml
7-aminoclonazepam	3.561	765906	785.44	102.5	12595.08	4210259	10.0000 ng/ml
7-aminoflunitrazepam	3.761	1719342	302.01	18.5	235.81	4210259	10.0000 ng/ml
9-Hydroxyrisperidone	3.785	5245893	8373769.43	2.9	38183.48	17920791	10.0000 ng/ml
Acetyl Fentanyl	3.712	140573	776.51	77.2	42624.76	31648942	10.0000 ng/ml
Acetyl Norfentanyl	2.890	397585	21408.06	29.7	404.48	31648942	10.0000 ng/ml
a-hydroxyalprazolam	4.483	221051	2027.73	29.0	135.62	4210259	10.0000 ng/ml
alpha-hydroxymidazolam	4.496	2005307	665.77	53.3	773601.44	4210259	10.0000 ng/ml
Alpha-PHP	3.750	3866005	9051.47	31.7	623.51	31648942	10.0000 ng/ml
alpha-PVP	3.489	8140040	944.20	40.1	876.12	9516493	10.0000 ng/ml
Alprazolam	4.593	2160260	574.52	90.9	1638.81	15806930	10.0000 ng/ml
Amitriptyline	4.365	899268	200.01	57.2	732.57	2026108	10.0000 ng/ml
Amphetamine	2.894	3056238	349.50	284.6	2845.03	9516493	10.0000 ng/ml
Benzoylecgonine	3.392	94311	103986.39	20.7	17526.52	303785	10.0000 ng/ml
Bromazolam	4.649	617650	11232.36	134.6	892928.23	15806930	10.0000 ng/ml
Brompheniramine	3.990	25059	63.43	960.2	1138.81	39773235	10.0000 ng/ml
Buprenorphine	4.015	37216	70.06	10.6	1428.36	1508856	10.0000 ng/ml
Bupropion	3.688	4959024	669.33	62.0	974.93	18164008	10.0000 ng/ml
Carbamazepine	4.214	10599454	∞	94.1	6583.26	406422	10.0000 ng/ml
Carisoprodol	4.212	459359	7869.84	63.8	80.68	2976423	10.0000 ng/ml
Chlordiazepoxide	4.594	592730	283.93	133.7	264.25	15806930	10.0000 ng/ml
Chlorpheniramine	3.901	3614189	16690.83	0.2	3117.43	8356272	10.0000 ng/ml
Chlorpromazine	4.530	559470	246829.66	133.4	377.11	2161866	10.0000 ng/ml
Citalopram	4.020	2146925	740.88	30.0	713480.04	39773235	10.0000 ng/ml
Clomipramine	4.546	570546	62503.56	85.1	1162.31	39773235	10.0000 ng/ml
Clonazepam	4.422	1509989	807.73	20.9	350.00	406422	10.0000 ng/ml
Clonazolam	4.342	1370745	422092.12	19.9	82613.56	15806930	10.0000 ng/ml
Clozapine	4.112	2344438	852.52	77.3	1498.25	10087193	10.0000 ng/ml
Cocaethylene	3.743	4150962	2688939.98	42.8	2289.15	16110104	10.0000 ng/ml

AM #25 Multi-Drug Screen. Results



Name	RT	Resp.	S/N	Ratio	S/N	ISTD Resp.	Final Conc.
Cocaine	3.544	3207783	32840.63	22.3	497.68	16110104	10.0000 ng/ml
Codeine	2.733	350996	10755.88	74.5	7295.14	7937422	10.0000 ng/ml
Cyclobenzaprine	4.288	776518	2608.20	9.9	187.22	2026108	10.0000 ng/ml
Desipramine	4.320	1811457	842.97	37.8	550.60	2026108	10.0000 ng/ml
Dextromethorphan	4.025	1495087	1519.27	69.6	571.37	8356272	10.0000 ng/ml
Dextropropoxyphene	3.363	2303518	1141655.69	41.0	374.87	8356272	10.0000 ng/ml
Diazepam	4.810	802303	523.68	81.2	465.34	15806930	10.0000 ng/ml
Dihydrocodeine	2.717	774290	328.46	59.1	1607.66	7937422	10.0000 ng/ml
Diphenhydramine	3.979	6966378	3476741.39	21.0	159656.07	39773235	10.0000 ng/ml
DMT	2.953	52153	484.98	594.1	5059.83	8356272	10.0000 ng/ml
Doxepin	4.086	1018631	2258.70	37.0	99.25	10348638	10.0000 ng/ml
Doxylamine	3.593	7007274	19288.72	90.0	202.66	8356272	10.0000 ng/ml
Duloxetine	4.271	31265	5536.09	1032.7	402.77	405341	10.0000 ng/ml
EDDP	4.039	567904	448.60	70.9	133375.46	3718181	10.0000 ng/ml
Etazolam	4.502	4473909	376.65	41.5	774.62	15806930	10.0000 ng/ml
Etizolam	4.604	324061	195366.32	331.8	535668.82	15806930	10.0000 ng/ml
Fentanyl	3.942	67733	47.18	96.5	28657.54	9385471	10.0000 ng/ml
Flualprazolam	4.451	466632	182190.03	257.2	590777.29	15806930	10.0000 ng/ml
Flunitrazepam	4.531	1179361	1912.86	34.2	196844.25	15806930	10.0000 ng/ml
Fluorofentanyl	3.956	210225	74268.73	102.6	238.18	9385471	10.0000 ng/ml
Fluoxetine	4.285	696546	9181.83	5.0	73.75	1446330	10.0000 ng/ml
Flurazepam	4.063	1585013	1164.87	32.9	744.95	15806930	10.0000 ng/ml
Hydrocodone	2.931	1031906	726.83	36.5	372.88	7937422	10.0000 ng/ml
Hydromorphone	2.399	996534	10323.49	75.3	6988.58	139709	10.0000 ng/ml
Hydroxyzine	4.372	566075	298.73	74.2	1478.66	10087193	10.0000 ng/ml
Imipramine	4.318	1766343	1011.03	58.7	579.30	2026108	10.0000 ng/ml
Ketamine	3.319	3840412	2941.27	36.7	175.51	8415856	10.0000 ng/ml
Lamotrigine	3.471	397350	23270.61	52.8	146654.22	39773235	10.0000 ng/ml
Levamisole	2.891	3695625	1190.10	80.7	583.82	16110104	10.0000 ng/ml
Levetiracetam	2.664	1789607	362.61	55.8	304.69	39773235	10.0000 ng/ml
Lorazepam	4.406	564554	414.85	218.6	196.89	15806930	10.0000 ng/ml
Maprotiline	4.350	500841	71.33	51.2	219.69	2026108	10.0000 ng/ml
MDA	2.999	945323	223.76	47.9	209.25	28223055	10.0000 ng/ml
MDEA	3.213	2392322	585.88	55.5	481.83	28223055	10.0000 ng/ml
MDMA	3.075	3277564	261013.33	53.5	558.38	28223055	10.0000 ng/ml
Meperidine	3.564	2386654	414.23	39.6	709.60	8356272	10.0000 ng/ml
Meprobamate	3.675	239660	203.67	17.9	91.45	2976423	10.0000 ng/ml
Methadone	4.346	3790444	737.58	36.5	368.28	3718181	10.0000 ng/ml
Methamphetamine	2.986	3391558	1099.21	43.0	658.83	28223055	10.0000 ng/ml
Methocarbamol	3.580	378851	2420.67	73.8	108.21	3718181	10.0000 ng/ml
Methylphenidate	3.489	11989744	624.38	16.7	86.28	13359175	10.0000 ng/ml
Metoprolol	3.424	509433	272.73	142.2	424.24	8356272	10.0000 ng/ml
Midazolam	4.421	302232	64336.19	82.6	10966.77	15806930	10.0000 ng/ml
Mirtazapine	3.640	2908858	4465.55	179.7	3527.64	8356272	10.0000 ng/ml
Mitragynine	4.078	211096	146868.79	191.5	187287.23	8356272	10.0000 ng/ml
Morphine	2.233	177952	∞	103.7	785.30	139709	10.0000 ng/ml
Norbuprenorphine	3.785	30976	29307.31	176.6	54456.48	1508856	10.0000 ng/ml
Nordiazepam	4.674	1033923	1438.38	83.5	1224.56	15806930	10.0000 ng/ml
Norfentanyl	3.319	6406720	37631.72	38.7	3640.92	31648942	10.0000 ng/ml
Norhydrocodone	2.902	134947	139.88	31.3	24411.53	139709	10.0000 ng/ml
Norketamine	3.305	408156	217.45	586.7	2070.15	8415856	10.0000 ng/ml
Norperidine	3.581	2212132	3825906.06	54.0	1026.13	39773235	10.0000 ng/ml
Noroxycodone	2.870	717703	∞	23.6	433.83	8415856	10.0000 ng/ml
Nortriptyline	4.367	433223	518.25	77.9	586.77	2026108	10.0000 ng/ml
O-desmethyl-tramadol	2.904	7096895	21016.24	5.0	438.89	39773235	10.0000 ng/ml
O-desmethylvenlafaxine	3.240	1294002	602.56	718.8	17219.15	10311208	10.0000 ng/ml
Olanzapine	3.282	858634	383805.51	45.6	549.41	406422	10.0000 ng/ml
Oxazepam	4.487	1385155	273.70	79.4	190.43	11548778	10.0000 ng/ml
Oxycodone	2.883	2487033	768.26	26.6	41708.99	8415856	10.0000 ng/ml



AM #25 Multi-Drug Screen. Results

Name	RT	Resp.	S/N	Ratio	S/N	ISTD Resp.	Final Conc.
Oxymorphone	2.305	687338	∞	38.9	138.24	139709	10.0000 ng/ml
Paroxetine	4.282	95280	82.51	49.2	24335.20	1446330	10.0000 ng/ml
Phenazepam	4.619	1156286	575178.47	53.8	1067.28	15806930	10.0000 ng/ml
Phencyclidine	3.889	4052168	351.77	52.4	550.54	8356272	10.0000 ng/ml
Phentermine	3.139	818089	49.13	7.8	35.21	13359175	10.0000 ng/ml
Phenytoin	4.120	1082088	178490.34	65.9	301.69	406422	10.0000 ng/ml
Primidone	3.475	1927922	1317225.21	106.6	238.72	406422	10.0000 ng/ml
Promethazine	4.240	2744966	84861.68	33.0	525.22	39773235	10.0000 ng/ml
Pseudoephedrine	2.710	47366810	22308.50	25.7	2537.45	28223055	10.0000 ng/ml
Quetiapine	4.187	2969330	4587.05	45.3	386480.20	34991230	10.0000 ng/ml
Risperidone	3.955	2484732	924908.65	11.5	465.09	17920791	10.0000 ng/ml
Sertraline	4.501	287397	236613.55	94.0	125658.47	1446330	10.0000 ng/ml
Sufentanil	4.186	43751	27776.37	101.4	329.16	31648942	10.0000 ng/ml
Tapentadol	3.429	3322856	6186.56	49.2	616.79	8415856	10.0000 ng/ml
Temazepam	4.640	2804831	893.90	36.2	186.00	15806930	10.0000 ng/ml
Topiramate	3.834	48092	41348.18	5.6	2043.95	36412	10.0000 ng/ml
Tramadol	3.409	12933229	∞	1.6	42.78	39773235	10.0000 ng/ml
Trazodone	4.017	2012440	767.26	78.7	505183.00	10348638	10.0000 ng/ml
Venlafaxine	3.778	3618283	90820.10	33.9	182.55	10311208	10.0000 ng/ml
Xylazine	3.351	2884276	6186.10	43.4	137.19	8415856	10.0000 ng/ml
Zaleplon	4.317	2582638	1393.26	75.7	702.26	34991230	10.0000 ng/ml
Zolpidem	3.760	6353177	4842.95	29.9	322042.24	34991230	10.0000 ng/ml
Zopiclone	3.694	328916	2108.95	57.0	226.56	1562069	10.0000 ng/ml

AM# 26: Screening of THC and Metabolites in Blood and Urine by LC-MS/MS

Extraction Date: 10/24/2023
Plate lot#: 220802
Mobile phase A: 10mM Amm Form
Blank Blood Lot: Lampire 23E52981
LCMS-QQQ ID: 069901

Analyst: Celena Shrum
Plate Retest Date: 07/23/2023- external control used
Mobile phase B: 0.1% Formic Acid in MeOH
Column: Phenomenex Phenyl Hexyl (4.6x50mm, 2.6um)

Pre-Analytic:

- 1. Check levels of mobile phases and needle wash refill as needed. Ensure waste is not full.
- 2. Ensure correct column is installed and begin mobile phase flow allow to equilibrate ~ 30 minutes.

Analytic:

- 1. Remove standards, plate, controls, and samples from cold storage. Allow to reach room temperature.
- 2. Urine hydrolysis (if applicable): add 1.5mL urine to blank plate, add 250µl 1N KOH. Shake and incubate at 40 degrees for 15 minutes.
- 3. Using a calibrated pipette, add **1000µl blood or 1000µl hydrolyzed urine** into the appropriate wells of analytical (standards) plate. **Pipette ID: #42**
- 4. Place on shaking incubator at ambient temp., 900rpm for 15 minutes.
- 5. Pipette **500µL 0.1% formic acid in water to blood samples and 500µl of saturated phosphate buffer to urine samples** to the appropriate wells of the analytical plate.
- 6. Place on shaking incubator at ambient temp., 900rpm for 15 minutes.
- 7. Transfer **800µL of blood+acid mixture or urine+acid** to corresponding wells of SLE+ plate.
- 8. Apply positive pressure for approx. 10-15 seconds (or until no liquid remains on top of sorbent). **(Load at 85-100 PSI- Selector to the right)** Manifold ID: 067104
- 9. Wait 5 minutes.
- 10. Add **2.25mL MTBE. (Add in 3 increments of 750uL)**
- 11. Wait 5 minutes.
- 12. Apply positive pressure for approx. 15 seconds. **(10-15 PSI- Selector to the left).**
- 13. Add **2.25mL Hexane. (Add in 3 increments of 750uL)**
- 14. Wait 5 minutes.
- 15. Apply positive pressure for approx. 15 seconds. **(10-15 PSI- Selector to the left).**
- 16. Remove plate containing eluate. Place on SPE Dry and evaporate to dryness at approx. 35°C. **SPE Dry ID: 067103**
- 16. Reconstitute in **100µL 100% MeOH** and heat seal plate with foil. Place in autosampler and run worklist.

Post-Analytic

- 1. Create batch and process data.
- 2. Make any necessary integration changes, R² values ≥0.98 for each analyte
- 3. RT +/- 2% or 0.100 min, whichever is greater
- 4. Confirmation testing on case samples with a response for THC and OH-THC of 3ng/mL or greater and/or Carboxy-THC at 10ng/mL or greater (analyst discretion between 5-10ng/mL) may be pursued.
- 5. Did all QCs pass for each analyte? (if not, describe in comments section)
- 6. Central File Packet to include: LIMS Worklist, Method Checklist, Calibration and Control Reports

COMMENTS: M2023-3011-1 and M2023-4028-1 had incorrect well positions specified and were reconstituted and reinjected after the well positions were corrected.

	1	2	3	4	5	6
a	cal 1ng	QC 2	M2023-4214-1	P2023-2914-1	P2023-3186-1	P2023-2841-1
b	cal 3 ng	NEG CTRL	M2023-4218-3	P2023-3094-1	P2023-3191-1	
c	cal 5 ng	M2023-3011-1	M2023-4257-1	P2023-3097-1	P2023-3194-1	
d	cal 10ng	M2023-4028-1	M2023-4275-1*	P2023-3114-2	P2023-3207-1	
e	cal 25 ng	M2023-4028-2	M2023-4288-2	P2023-3123-2	P2023-3215-1	
f	cal 50 ng	M2023-4028-3	M2023-4350-2	P2023-3132-1	P2023-3219-1	
g	cal 100 ng	M2023-4028-4	P2023-2785-1	P2023-3133-1	External Ctrl	
h	QC 1	M2023-4210-2	P2023-2841-1*	P2023-3147-1	M2023-4275-1	

*Moved during SLE portion of the extraction

AM #26 Cannabinoids Screen Results



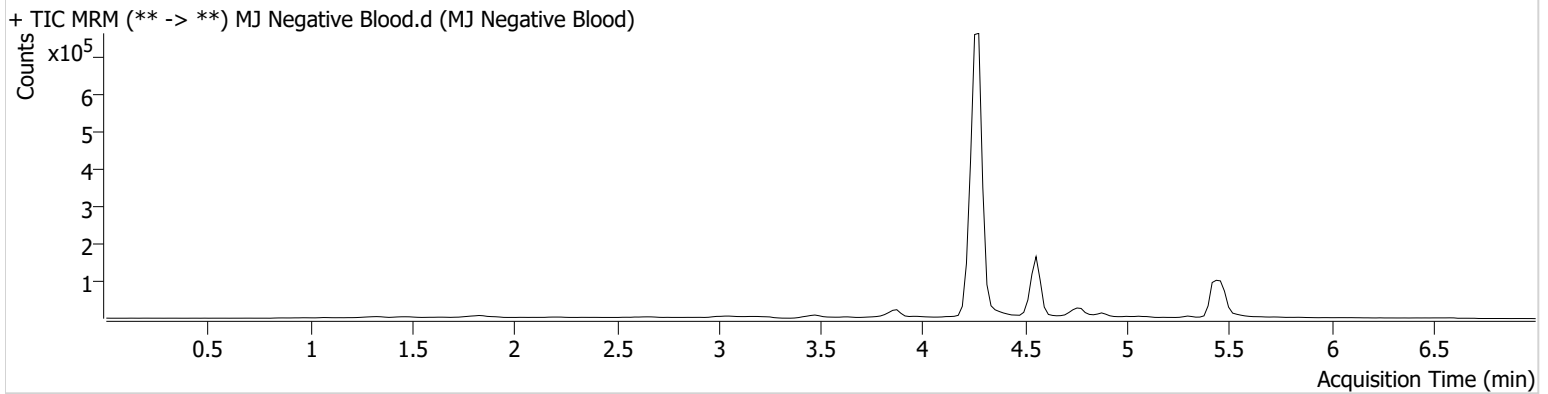
Batch results D:\MassHunter\Data\2023\AM 25 26\102423 AM 25 26 CS\QuantResults\AM 26.batch.bin
Calibration Last Update 10/27/2023 11:34:51 AM

Instrument Falco (069901)
Type Sample
Acq. Method AM 26 THC.m
Sample Position P1-B2
Injection Volume 10
Acq. Date-Time 10/24/2023 4:32:53 PM
Sample Info.

Data File MJ Negative Blood.d
Sample MJ Negative Blood
Operator Celena Shrum
Comment

Only drugs and concentrations listed on the laboratory report itself are appropriate to be used for interpretation purposes. Any drugs or values included in the notes but not included on the report are used by laboratory personnel to make determinations/reach conclusions within the confines of the methods.

Sample Chromatogram





AM #26 Cannabinoids Screen Results

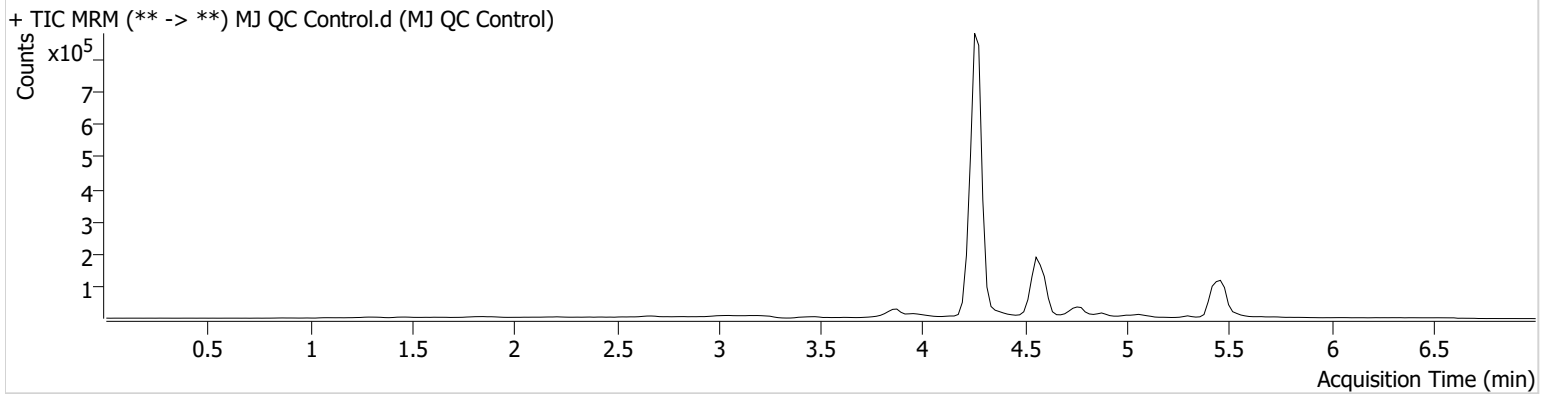
Batch results D:\MassHunter\Data\2023\AM 25 26\102423 AM 25 26 CS\QuantResults\AM 26.batch.bin
Calibration Last Update 10/27/2023 11:34:51 AM

Instrument Falco (069901)
Type QC
Acq. Method AM 26 THC.m
Sample Position P1-H1
Injection Volume 10
Acq. Date-Time 10/24/2023 4:17:43 PM
Sample Info.

Data File MJ QC Control.d
Sample MJ QC Control
Operator Celena Shrum
Comment

Only drugs and concentrations listed on the laboratory report itself are appropriate to be used for interpretation purposes. Any drugs or values included in the notes but not included on the report are used by laboratory personnel to make determinations/reach conclusions within the confines of the methods.

Sample Chromatogram



Name	RT	Resp.	S/N	Ratio	S/N	ISTD Resp.	Final Conc.
THC	5.429	3708	42.91	256.7 High	∞	150152	4.7718 ng/ml
THC-COOH	4.596	140644	166.60	144.0	∞	524283	15.6881 ng/ml
THC-OH	4.282	30575	∞	929.1	∞	3236597	4.5276 ng/ml

AM #26 Cannabinoids Screen Results



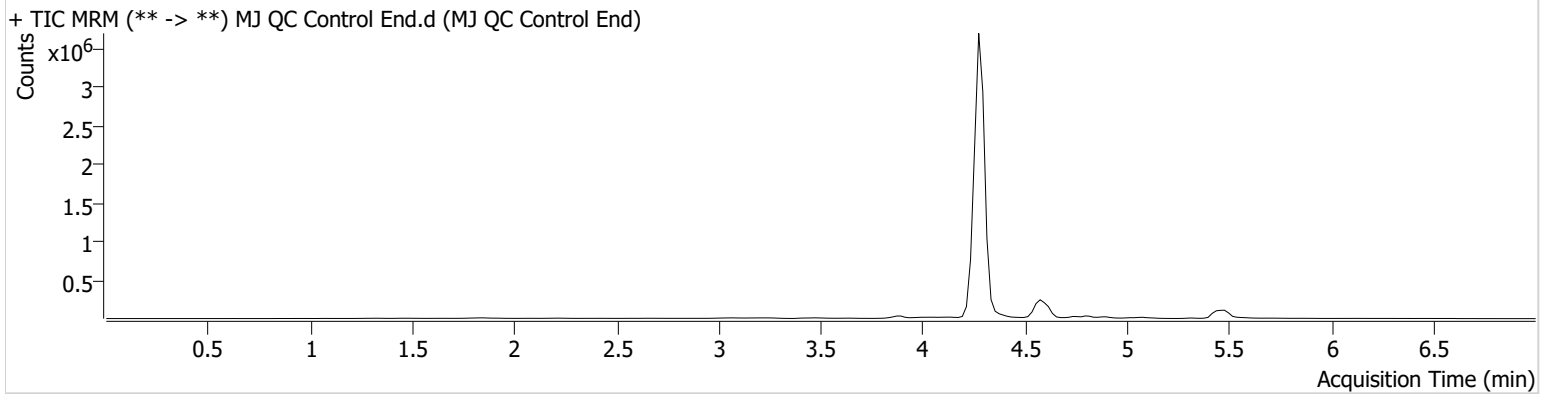
Batch results D:\MassHunter\Data\2023\AM 25 26\102423 AM 25 26 CS\QuantResults\AM 26.batch.bin
Calibration Last Update 10/27/2023 11:34:51 AM

Instrument Falco (069901)
Type QC
Acq. Method AM 26 THC.m
Sample Position P1-A2
Injection Volume 10
Acq. Date-Time 10/24/2023 8:19:53 PM
Sample Info.

Data File MJ QC Control End.d
Sample MJ QC Control End
Operator Celena Shrum
Comment

Only drugs and concentrations listed on the laboratory report itself are appropriate to be used for interpretation purposes. Any drugs or values included in the notes but not included on the report are used by laboratory personnel to make determinations/reach conclusions within the confines of the methods.

Sample Chromatogram



Name	RT	Resp.	S/N	Ratio	S/N	ISTD Resp.	Final Conc.
THC	5.449	4621	11.47	168.4	∞	173428	5.1401 ng/ml
THC-COOH	4.616	177518	58.92	145.1	∞	701131	14.8128 ng/ml
THC-OH	4.302	109639	∞	747.2	∞	12415228	4.2478 ng/ml

AM #26 Cannabinoids Screen Results



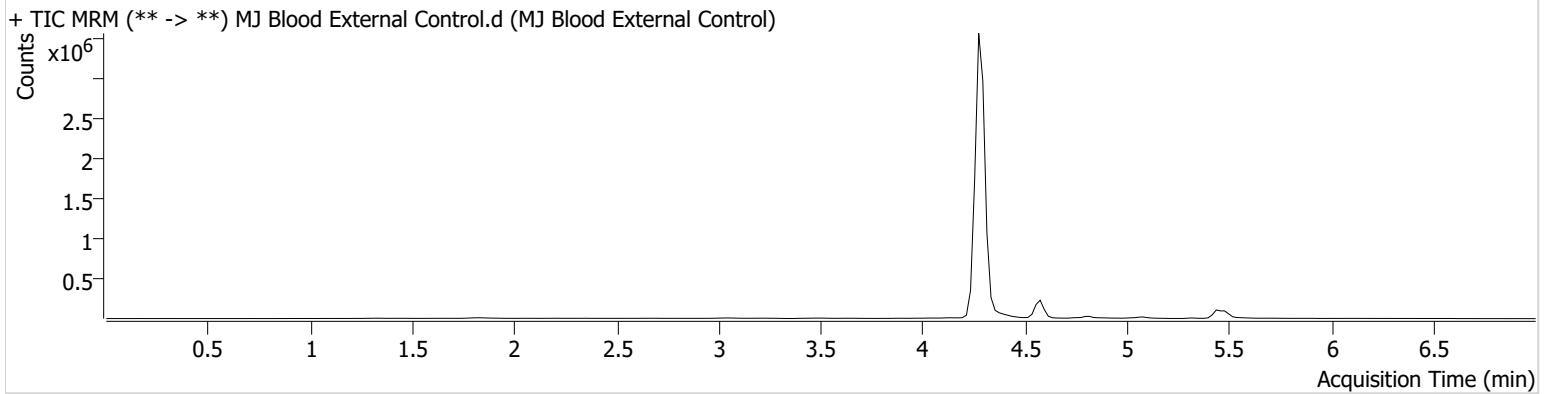
Batch results D:\MassHunter\Data\2023\AM 25 26\102423 AM 25 26 CS\QuantResults\AM 26.batch.bin
Calibration Last Update 10/27/2023 11:34:51 AM

Instrument Falco (069901)
Type Sample
Acq. Method AM 26 THC.m
Sample Position P1-G5
Injection Volume 10
Acq. Date-Time 10/24/2023 8:12:19 PM
Sample Info.

Data File MJ Blood External Control.d
Sample MJ Blood External Control
Operator Celena Shrum
Comment

Only drugs and concentrations listed on the laboratory report itself are appropriate to be used for interpretation purposes. Any drugs or values included in the notes but not included on the report are used by laboratory personnel to make determinations/reach conclusions within the confines of the methods.

Sample Chromatogram



Name	RT	Resp.	S/N	Ratio	S/N	ISTD Resp.	Final Conc.
THC	5.449	39156	∞	41.8 Low	227.15	171909	43.0715 ng/ml



Idaho State Police Forensic Services

AM #26 Screening of THC and Metabolites and AM #27 Confirmation of THC and Metabolites Blood External Control Prep Sheet

Methanol External Control Solution (Lot: WS091323)

10 μ L of 1mg/mL THC in 9990 μ L MeOH

Approximate concentration 1ug/mL.

<i>Component</i>	<i>Source</i>	<i>Source Lot Number</i>	<i>Expiration Date</i>
Methanol (LCMS)	Fisher	217005	-
THC	Cerilliant	FE05252135	02/28/2027
Prepared:	09/13/2023		
Expires:	09/13/2024		
Prepared By:	Tamara Salazar		

Blood External Control Solution (Lot: 091323)

500 ul of methanol external control solution was added to 9500 ul of blood.

Approximately 50ng/mL each

<i>Component</i>	<i>Source</i>	<i>Source Lot Number</i>
Negative Blood	Lampire	23E52981
Methanol External Control Solution	-	WS101322
Prepared:	09/13/2023	
Expires:	09/13/2024	
Prepared by:	Tamara Salazar	

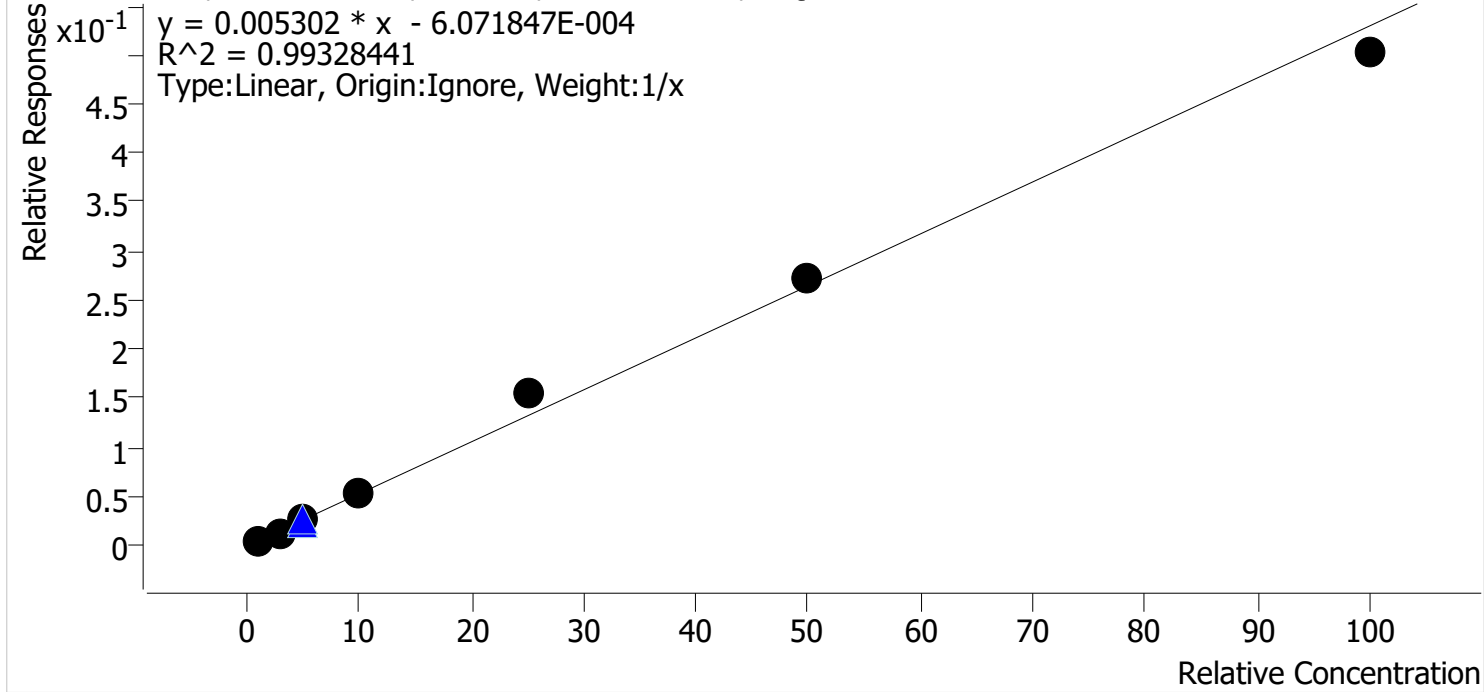
5



AM #26 Cannabinoids Screen Calibration Curve Report

Batch results D:\MassHunter\Data\2023\AM 25 26\102423 AM 25 26 CS\QuantResults\AM 26.batch.bin
Last Cal. Update 10/27/2023 11:34 AM
Analyst Name ISP\Datastor
Analyte THC **Internal Standard** THC-D3

THC - 7 Levels, 7 Levels Used, 7 Points, 7 Points Used, 2 QCs



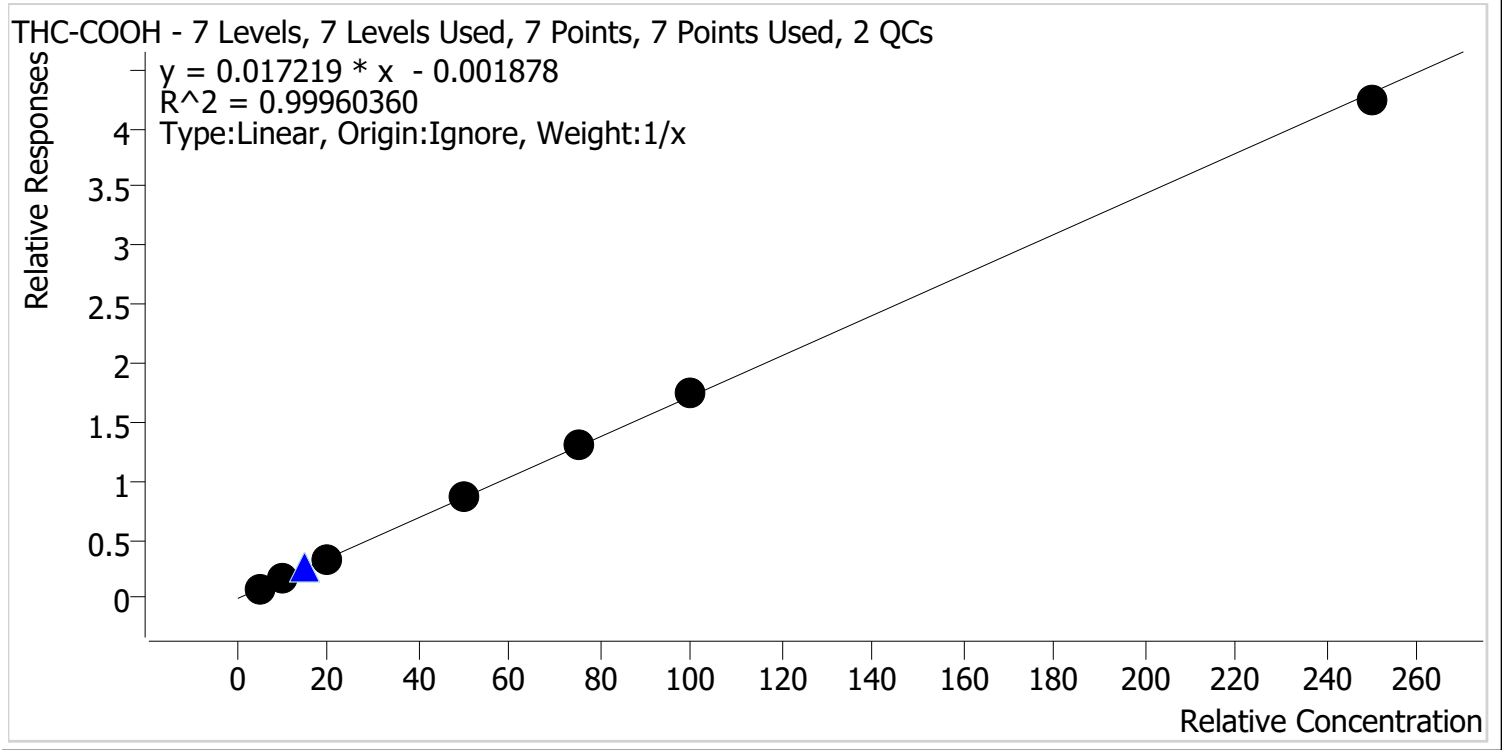
Sample	Level	Enabled	Expected Concentration	Final Concentration	Accuracy
MJ Cal 1	1	✓	1.0	1.0	98.9
MJ Cal 2	2	✓	3.0	2.5	84.9
MJ Cal 3	3	✓	5.0	5.1	102.2
MJ Cal 4	4	✓	10.0	9.9	99.4
MJ Cal 5	5	✓	25.0	29.3	117.3
MJ Cal 6	6	✓	50.0	51.3	102.5
MJ Cal 7	7	✓	100.0	94.8	94.8

CS



AM #26 Cannabinoids Screen Calibration Curve Report

Batch results D:\MassHunter\Data\2023\AM 25 26\102423 AM 25 26 CS\QuantResults\AM 26.batch.bin
Last Cal. Update 10/27/2023 11:34 AM
Analyst Name ISP\Datastor
Analyte THC-COOH **Internal Standard** THC-COOH-D9



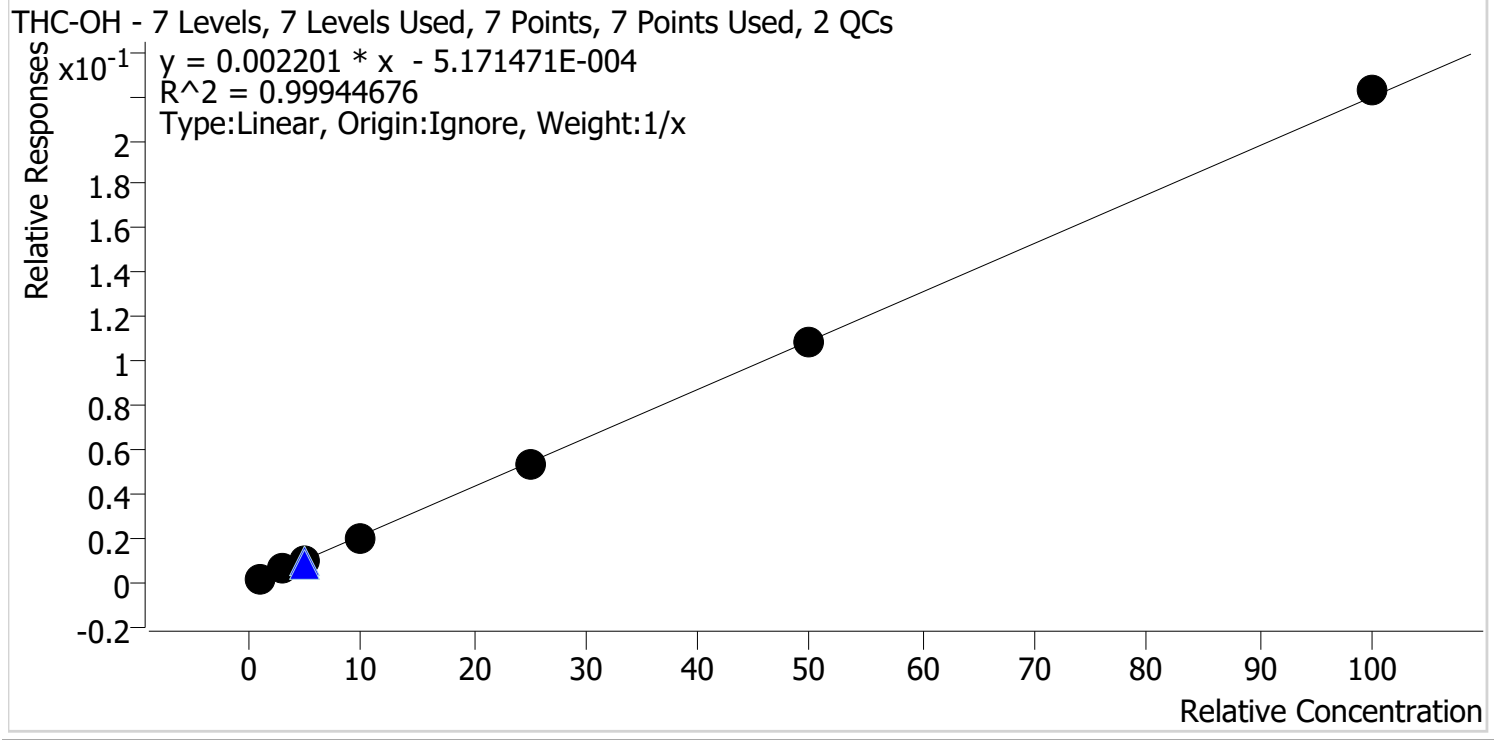
Sample	Level	Enabled	Expected Concentration	Final Concentration	Accuracy
MJ Cal 1	1	✓	5.0	4.9	98.0
MJ Cal 2	2	✓	10.0	9.8	97.7
MJ Cal 3	3	✓	20.0	20.1	100.5
MJ Cal 4	4	✓	50.0	50.8	101.6
MJ Cal 5	5	✓	75.0	76.1	101.5
MJ Cal 6	6	✓	100.0	102.3	102.3
MJ Cal 7	7	✓	250.0	246.0	98.4

29



AM #26 Cannabinoids Screen Calibration Curve Report

Batch results D:\MassHunter\Data\2023\AM 25 26\102423 AM 25 26 CS\QuantResults\AM 26.batch.bin
Last Cal. Update 10/27/2023 11:34 AM
Analyst Name ISP\Datastor
Analyte THC-OH **Internal Standard** THC-OH-D3



Sample	Level	Enabled	Expected Concentration	Final Concentration	Accuracy
MJ Cal 1	1	✓	1.0	1.1	112.8
MJ Cal 2	2	✓	3.0	3.0	99.2
MJ Cal 3	3	✓	5.0	4.7	94.6
MJ Cal 4	4	✓	10.0	9.4	93.9
MJ Cal 5	5	✓	25.0	24.6	98.6
MJ Cal 6	6	✓	50.0	49.8	99.7
MJ Cal 7	7	✓	100.0	101.3	101.3



AM #26 Cannabinoids Screen Results

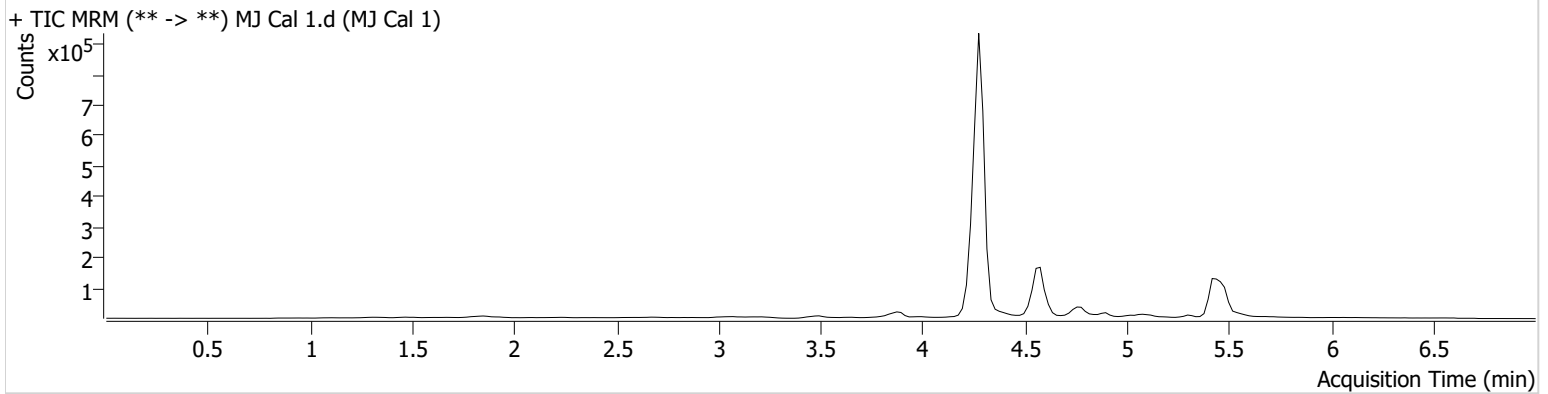
Batch results D:\MassHunter\Data\2023\AM 25 26\102423 AM 25 26 CS\QuantResults\AM 26.batch.bin
Calibration Last Update 10/27/2023 11:34:51 AM

Instrument Falco (069901)
Type Cal
Acq. Method AM 26 THC.m
Sample Position P1-A1
Injection Volume 10
Acq. Date-Time 10/24/2023 3:24:34 PM
Sample Info.

Data File MJ Cal 1.d
Sample MJ Cal 1
Operator Celena Shrum
Comment

Only drugs and concentrations listed on the laboratory report itself are appropriate to be used for interpretation purposes. Any drugs or values included in the notes but not included on the report are used by laboratory personnel to make determinations/reach conclusions within the confines of the methods.

Sample Chromatogram



Name	RT	Resp.	S/N	Ratio	S/N	ISTD Resp.	Final Conc.
THC	5.429	1191	∞	741.6 High	∞	257000	0.9887 ng/ml
THC-COOH	4.596	48119	∞	147.7	∞	583184	4.9009 ng/ml
THC-OH	4.302	6767	26.22	1755.8 High	28.44	3443017	1.1281 ng/ml



AM #26 Cannabinoids Screen Results

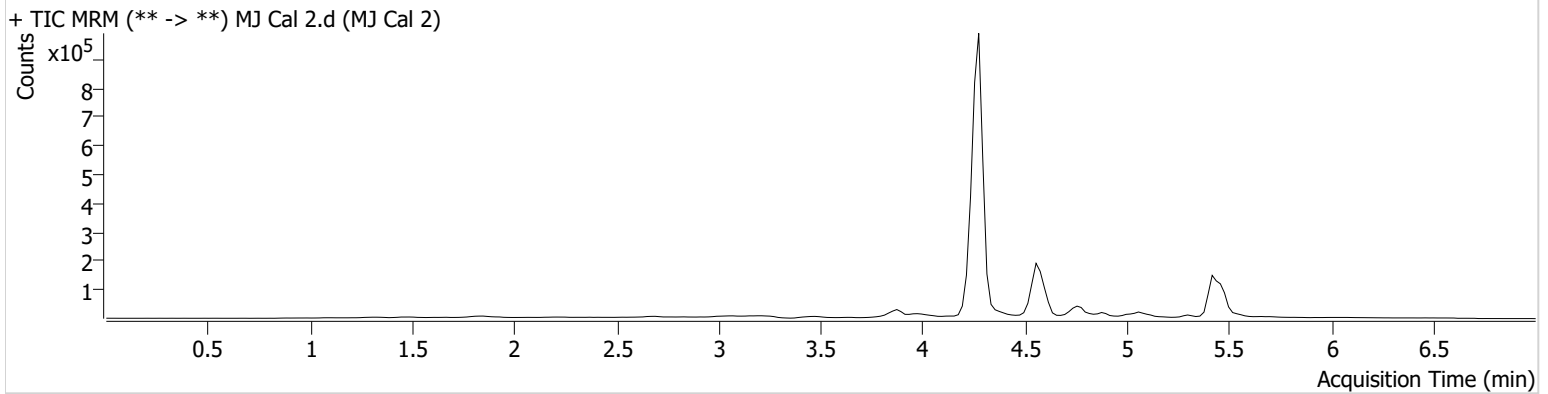
Batch results D:\MassHunter\Data\2023\AM 25 26\102423 AM 25 26 CS\QuantResults\AM 26.batch.bin
Calibration Last Update 10/27/2023 11:34:51 AM

Instrument Falco (069901)
Type Cal
Acq. Method AM 26 THC.m
Sample Position P1-B1
Injection Volume 10
Acq. Date-Time 10/24/2023 3:32:19 PM
Sample Info.

Data File MJ Cal 2.d
Sample MJ Cal 2
Operator Celena Shrum
Comment

Only drugs and concentrations listed on the laboratory report itself are appropriate to be used for interpretation purposes. Any drugs or values included in the notes but not included on the report are used by laboratory personnel to make determinations/reach conclusions within the confines of the methods.

Sample Chromatogram



Name	RT	Resp.	S/N	Ratio	S/N	ISTD Resp.	Final Conc.
THC	5.429	4114	∞	209.1 High	5.89 Low	319054	2.5465 ng/ml
THC-COOH	4.596	96775	∞	143.4	∞	581723	9.7703 ng/ml
THC-OH	4.282	21355	∞	1010.5 High	∞	3539532	2.9766 ng/ml



AM #26 Cannabinoids Screen Results

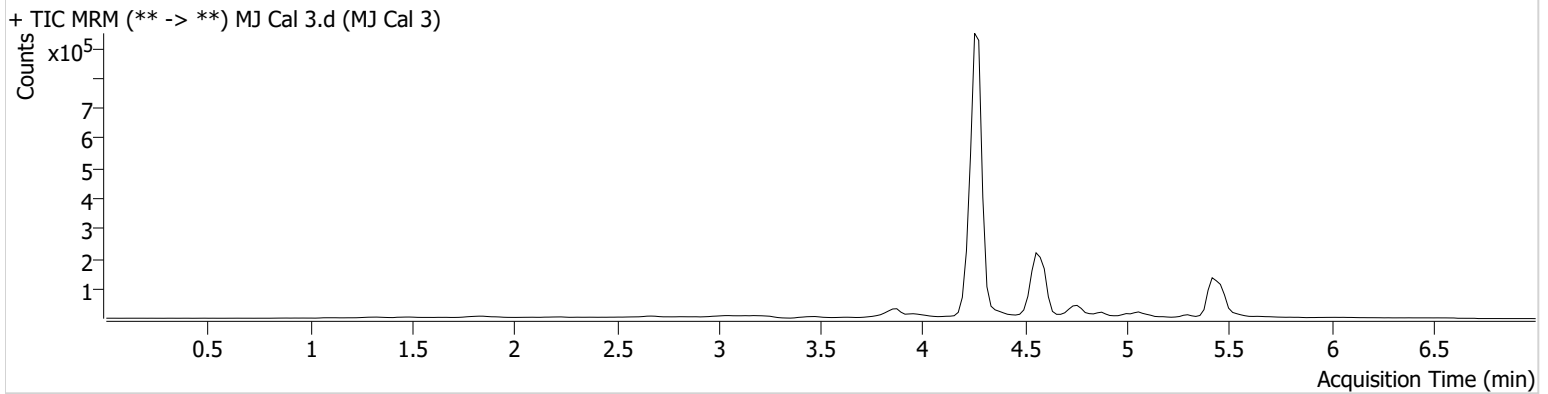
Batch results D:\MassHunter\Data\2023\AM 25 26\102423 AM 25 26 CS\QuantResults\AM 26.batch.bin
Calibration Last Update 10/27/2023 11:34:51 AM

Instrument Falco (069901)
Type Cal
Acq. Method AM 26 THC.m
Sample Position P1-C1
Injection Volume 10
Acq. Date-Time 10/24/2023 3:39:53 PM
Sample Info.

Data File MJ Cal 3.d
Sample MJ Cal 3
Operator Celena Shrum
Comment

Only drugs and concentrations listed on the laboratory report itself are appropriate to be used for interpretation purposes. Any drugs or values included in the notes but not included on the report are used by laboratory personnel to make determinations/reach conclusions within the confines of the methods.

Sample Chromatogram



Name	RT	Resp.	S/N	Ratio	S/N	ISTD Resp.	Final Conc.
THC	5.429	6786	∞	137.8 Low	∞	256268	5.1086 ng/ml
THC-COOH	4.596	197902	172.74	149.4	∞	574782	20.1045 ng/ml
THC-OH	4.282	34998	∞	937.8	∞	3539505	4.7280 ng/ml



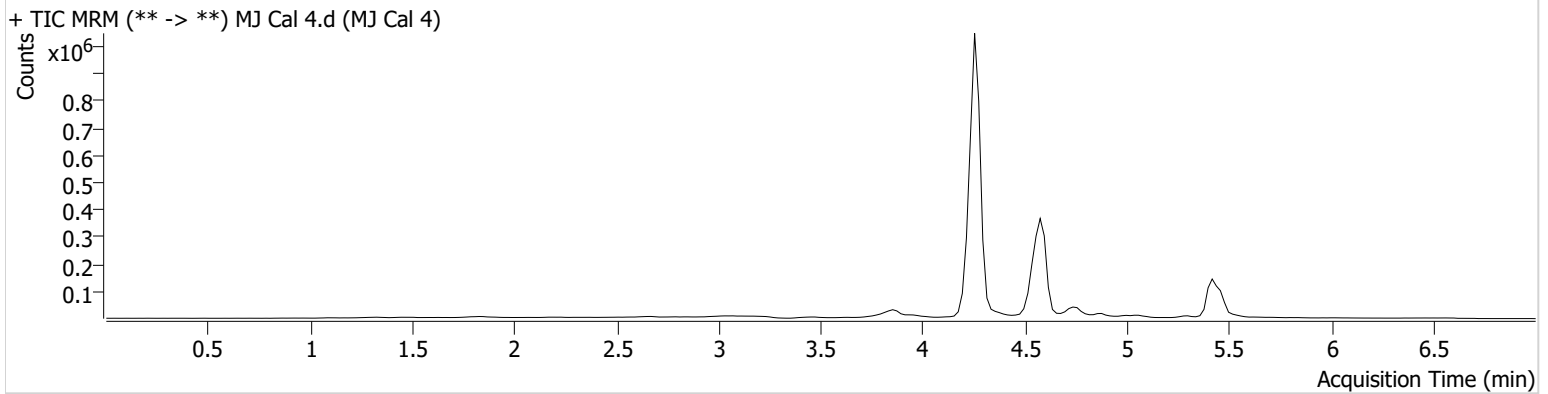
AM #26 Cannabinoids Screen Results

Batch results D:\MassHunter\Data\2023\AM 25 26\102423 AM 25 26 CS\QuantResults\AM 26.batch.bin
Calibration Last Update 10/27/2023 11:34:51 AM

Instrument Falco (069901) **Data File** MJ Cal 4.d
Type Cal **Sample** MJ Cal 4
Acq. Method AM 26 THC.m **Operator** Celena Shrum
Sample Position P1-D1 **Comment**
Injection Volume 10
Acq. Date-Time 10/24/2023 3:47:27 PM
Sample Info.

Only drugs and concentrations listed on the laboratory report itself are appropriate to be used for interpretation purposes. Any drugs or values included in the notes but not included on the report are used by laboratory personnel to make determinations/reach conclusions within the confines of the methods.

Sample Chromatogram



Name	RT	Resp.	S/N	Ratio	S/N	ISTD Resp.	Final Conc.
THC	5.429	15247	∞	73.5 Low	∞	292553	9.9435 ng/ml
THC-COOH	4.576	462875	∞	143.1	∞	530509	50.7797 ng/ml
THC-OH	4.282	67281	∞	815.5	∞	3340487	9.3871 ng/ml



AM #26 Cannabinoids Screen Results

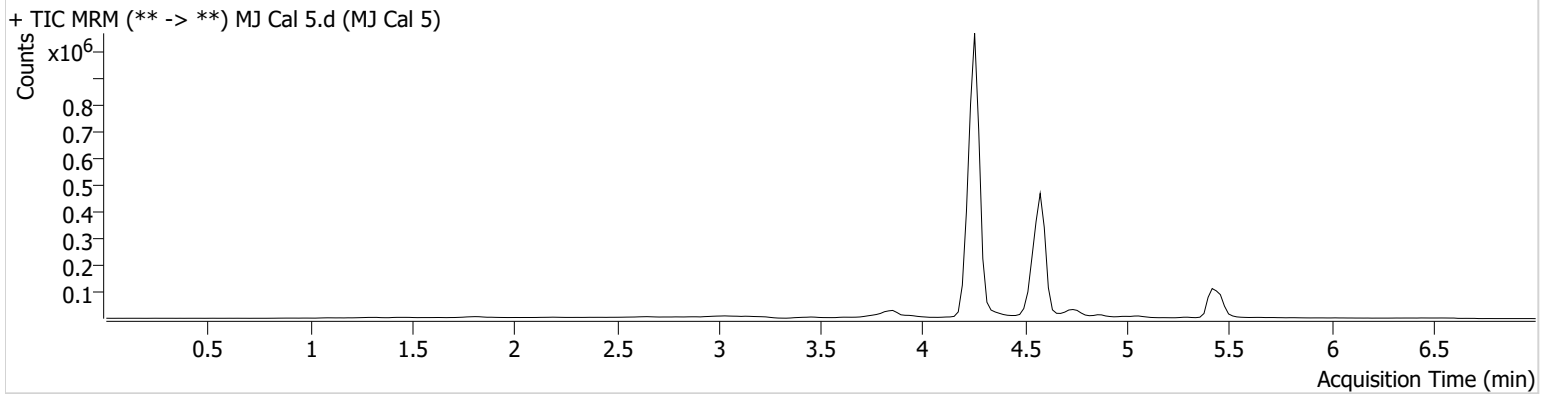
Batch results D:\MassHunter\Data\2023\AM 25 26\102423 AM 25 26 CS\QuantResults\AM 26.batch.bin
Calibration Last Update 10/27/2023 11:34:51 AM

Instrument Falco (069901)
Type Cal
Acq. Method AM 26 THC.m
Sample Position P1-E1
Injection Volume 10
Acq. Date-Time 10/24/2023 3:55:00 PM
Sample Info.

Data File MJ Cal 5.d
Sample MJ Cal 5
Operator Celena Shrum
Comment

Only drugs and concentrations listed on the laboratory report itself are appropriate to be used for interpretation purposes. Any drugs or values included in the notes but not included on the report are used by laboratory personnel to make determinations/reach conclusions within the confines of the methods.

Sample Chromatogram



Name	RT	Resp.	S/N	Ratio	S/N	ISTD Resp.	Final Conc.
THC	5.429	30197	141.86	45.4 Low	∞	195022	29.3166 ng/ml
THC-COOH	4.576	604148	∞	149.1	374.87	461710	76.0994 ng/ml
THC-OH	4.262	152913	∞	724.1	∞	2847304	24.6383 ng/ml



AM #26 Cannabinoids Screen Results

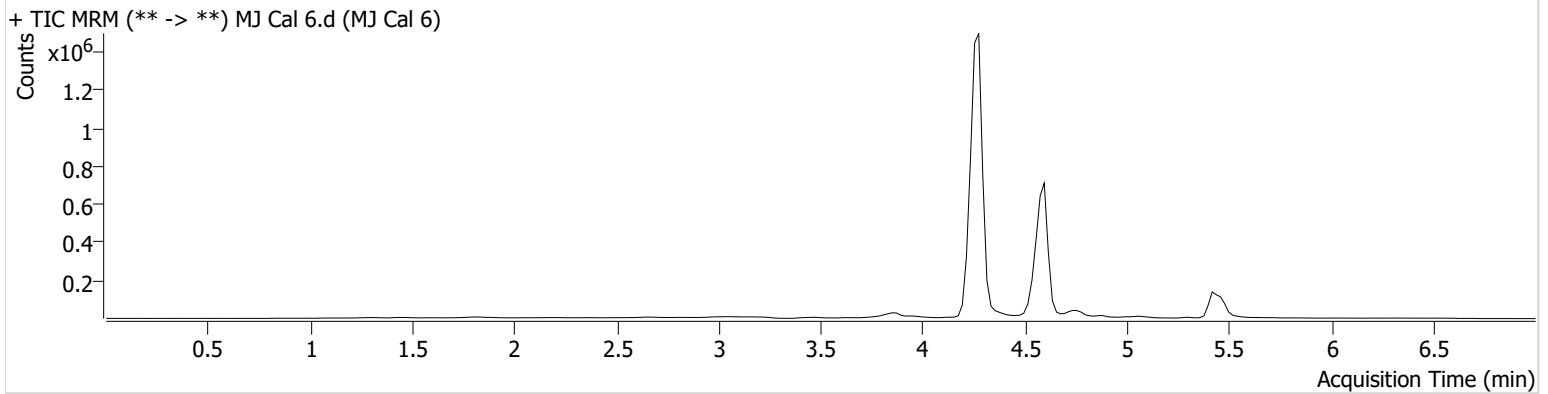
Batch results D:\MassHunter\Data\2023\AM 25 26\102423 AM 25 26 CS\QuantResults\AM 26.batch.bin
Calibration Last Update 10/27/2023 11:34:51 AM

Instrument Falco (069901)
Type Cal
Acq. Method AM 26 THC.m
Sample Position P1-F1
Injection Volume 10
Acq. Date-Time 10/24/2023 4:02:34 PM
Sample Info.

Data File MJ Cal 6.d
Sample MJ Cal 6
Operator Celena Shrum
Comment

Only drugs and concentrations listed on the laboratory report itself are appropriate to be used for interpretation purposes. Any drugs or values included in the notes but not included on the report are used by laboratory personnel to make determinations/reach conclusions within the confines of the methods.

Sample Chromatogram



Name	RT	Resp.	S/N	Ratio	S/N	ISTD Resp.	Final Conc.
THC	5.429	58841	∞	39.8 Low	∞	216917	51.2732 ng/ml
THC-COOH	4.596	969665	∞	147.5	317.69	550928	102.3233 ng/ml
THC-OH	4.282	365254	∞	702.1	∞	3345470	49.8457 ng/ml



AM #26 Cannabinoids Screen Results

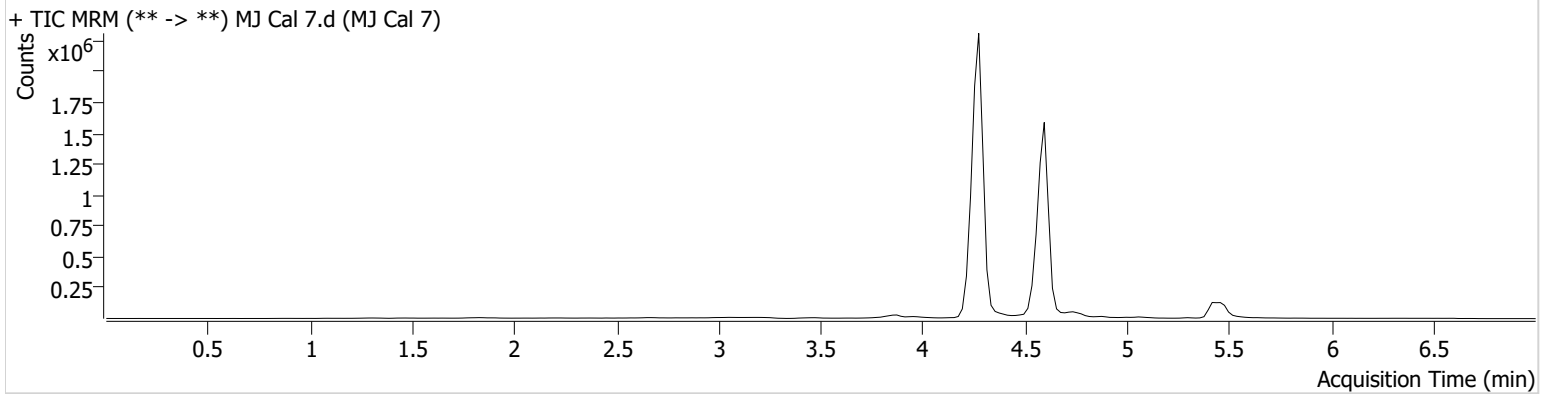
Batch results D:\MassHunter\Data\2023\AM 25 26\102423 AM 25 26 CS\QuantResults\AM 26.batch.bin
Calibration Last Update 10/27/2023 11:34:51 AM

Instrument Falco (069901)
Type Cal
Acq. Method AM 26 THC.m
Sample Position P1-G1
Injection Volume 10
Acq. Date-Time 10/24/2023 4:10:09 PM
Sample Info.

Data File MJ Cal 7.d
Sample MJ Cal 7
Operator Celena Shrum
Comment

Only drugs and concentrations listed on the laboratory report itself are appropriate to be used for interpretation purposes. Any drugs or values included in the notes but not included on the report are used by laboratory personnel to make determinations/reach conclusions within the confines of the methods.

Sample Chromatogram



Name	RT	Resp.	S/N	Ratio	S/N	ISTD Resp.	Final Conc.
THC	5.429	68309	∞	47.7 Low	122.66	136026	94.8228 ng/ml
THC-COOH	4.596	2227920	∞	146.5	∞	526142	246.0220 ng/ml
THC-OH	4.282	727562	∞	695.3	∞	3271320	101.2962 ng/ml